

# PUPIL PLACE PLAN 2020-2024



# Table of Contents

INTRODUCTION .....	2
PUPIL PLACE PLANNING (PPP).....	3
CONTEXT .....	4
SCHOOLS AND PLANNING AREAS .....	6
PRIMARY FORECASTS .....	9
SECONDARY FORECASTS .....	21
COUNCIL WIDE ISSUES .....	28
ANNEX 1: PUPIL PLACE FORECASTING METHODOLOGY .....	29
ANNEX 2: SPECIAL EDUCATIONAL NEEDS AND DISABILITY (SEND) .....	32
ANNEX 3: PROVISION FOR PUPILS OUT OF SCHOOL.....	34
ANNEX 4: POST 16 PROVISION.....	35
ANNEX 5: MAP PRIMARY PHASE PLANNING AREAS.....	37
ANNEX 6: MAP SECONDARY PHASE PLANNING AREAS .....	38
ANNEX 7: PRIMARY FORECAST RECEPTION.....	39
ANNEX 8: PRIMARY FORECAST WHOLE SCHOOL .....	41
ANNEX 9: SECONDARY FORECAST YEAR 7 .....	43
ANNEX 9: SECONDARY FORECAST WHOLE SCHOOL.....	44

**For the purpose of this document, data has been extracted from the  
Autumn 2019 Census**

## INTRODUCTION

Thurrock has some very exciting regeneration programmes and we are committed to ensuring that we have high quality educational opportunities for our children and young people.

Our Pupil Place Planning (PPP) document has been widely used by stakeholders such as developers, and educational providers. The forecasts contained in this document are also used to inform the schools' capital programme and to date we have delivered a range of high quality projects that contributes to ensuring the delivery of good educational outcomes for the children and young people of Thurrock.

Two new Secondary Free Schools are opening in September 2020 in temporary sites with an initial Published Admissions Number of 120 pupils per school. This will affect the Secondary Year 7 forecast published in this booklet but will not be included in these figures until next year as this booklet is based on the Autumn 2019 census.

A new special free school, Treetops 2 will be delivered in Thurrock, and is due to open in September 2022.

There are plans for a new 2-form entry primary free school, located in Aveley planned to be delivered in the near future.

This data has allowed us to review trend data on pupil numbers which helps with future forecasting, we currently have 17,196 Primary Pupils and 10,173 Secondary Pupils. Thurrock continues to be a place of choice for families wishing to move into the area and this can be seen from the numbers of children and young people requiring a school place.

Thurrock has strong working relationships with our schools and academies and this allows us to work in partnership with them when identifying locations where we can build in additional capacity for additional places. The Council is committed to ensuring that we have clear processes in the decision making around meeting local demand for school places.

We hope that this document continues to be of interest to all stakeholders and that the content is both useful and clear.

Name: Michele Lucas.

Title: Assistant Director Education & Skills

June 2020.

## **PUPIL PLACE PLANNING (PPP)**

Over the last 7 years we have continued to see an increase in the primary population. The 2015/16 birth data is still the highest Thurrock has had at 2,505 with the two years either side of that just fractionally below the 2,500 and the current Year 3 is the highest cohort we have had at 2,545. The last three years average of birth data is 2,470). After reaching a peak of 2,505 births in 2015/16 we are now seeing a slight decline. Our primary cohort average is now 2,456 per year group, 2 new Secondary Free Schools should ease the pressure on secondary places as the primary cohort moves through. Thurrock is also getting a new Special Free School. The PPP document covers education for children in the age range of 4 – 16. Post 16 provision information is contained in Annex 4.

Special Educational Needs and Disability (SEND) educational provision and Early Years and Childcare provision are undertaken by other specialist areas within Thurrock Council and are not covered in this document.

Thurrock Council has a statutory responsibility to provide a school place for every child of school age who live in Thurrock. PPP is very complicated to predict with many factors dictating the outcome. Planning for school places begins with the acquisition of birth data which identifies the number of children that are born and the post code they live in and it is assumed that 4 years later they will enter the school system in a local school. There are a number of factors that are forever changing and need to be considered. In-year admissions, where children come into Thurrock mid-year (outside the normal admission rounds) are very difficult to foresee and project. Numbers of children that have moved into Thurrock from elsewhere in the country and those that have moved in from other countries can be seen in Annex 1.

Thurrock's forecasting for school places to date has been robust and accurate. The difficulty with forecasting is that although forecasts are accurate we are not able to identify how old the children will be that move into Thurrock and to what year group they will be applying for. This takes close monitoring and we need to be in a position at times to take swift action in opening up classes within certain year groups. Every effort is made to seek and offer a school place within reasonable travelling distance from the pupil's home.

Thurrock calculates the pupil yield from housing developments and then adds this to the projected pupil numbers. Thurrock currently does not project any child yield from a one bedroomed flat but the current economic climate suggest that this is now not so. Families moving in with other families make projecting pupil numbers now more difficult to predict the demand at local school level.

We are committed to ensuring that parental choice and an environment built on strong partnership foundations provides healthy competition across both primary, secondary and post 16 provision.

## CONTEXT

Under the banner **People, Place, Prosperity**, Thurrock Council is creating a place where people and businesses want to stay and thrive and developers and investors want to invest.

Investment in infrastructure for the benefit of residents and local businesses is key. Good roads, health services, schools and leisure facilities are all required to enable people to work and play, live and stay in the borough.

Situated on the north side of the River Thames bordering Essex, Kent and East London, Thurrock is an area of great contrast and unique opportunities and is a crucial strategic player in the South East Local Enterprise Partnership, South Essex 2050 partnership and the Thames Estuary plans.

Thurrock has a well-balanced mix of beauty and business with £20 billion investment planned for homes, jobs and infrastructure, including £6 billion being invested in private sector jobs.

Rural villages and market towns are set into the 70% of the borough which is green belt. Nature reserves, heritage locations and sites of special scientific interest abound.

Three international ports punctuate 18 miles of riverfront with cranes and gigantic container ships, while industrial parks line the A13, all within driving distance of the major London airports. Indeed, Thurrock is probably more important strategically to London than the London boroughs themselves as through our ports the capital is fed, fuelled and clothed.

There has been a lot of talk about plans in the past but there is now a step-change to actual delivery – some master plans are agreed, with contractors on-site and work is beginning.

Thurrock has a growing population – predicted to rise by approximately 10% every decade. The ethnic profile of Thurrock has become increasingly diverse over the last decade. Both the age and ethnic profiles change significantly between the 20 wards.

Together with partners, Thurrock Council is investing more than £70 million to create over 350 new school places across the borough in the coming years.

We are working towards a future where every resident has a job – 24,500 new jobs are planned over 20 years - with better educated children and skilled residents who can access local and national employment opportunities.

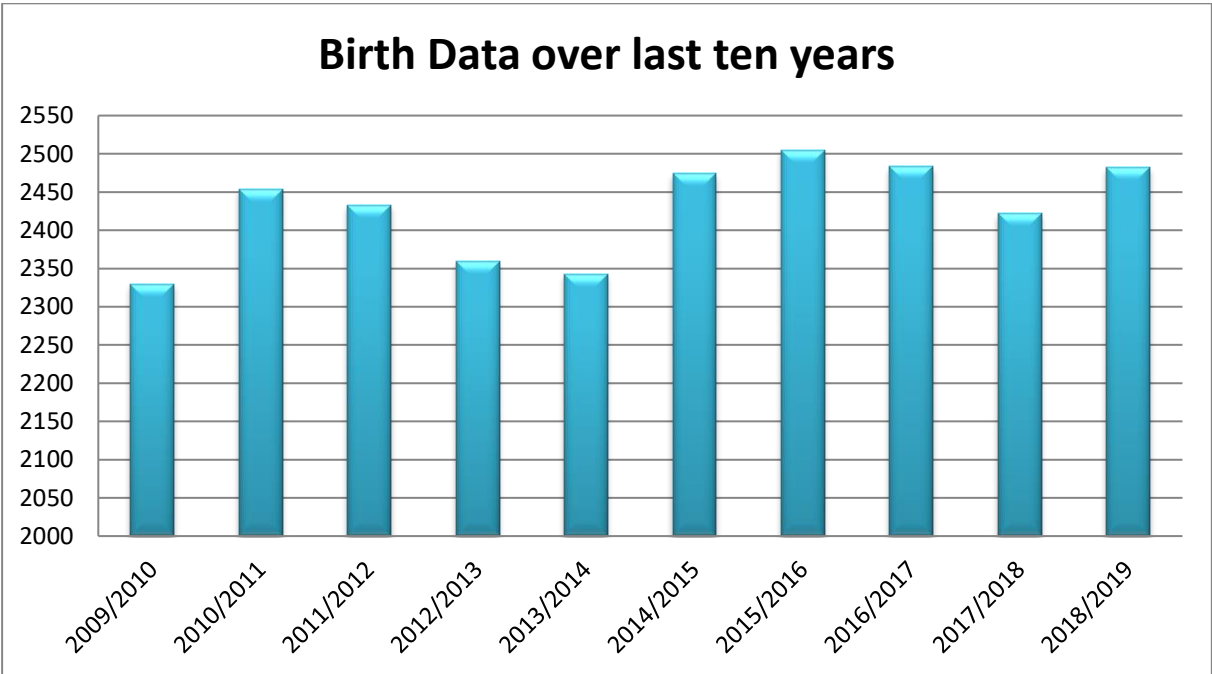
There are plans for four Integrated Medical Centres in the borough. This is just one of a series of game-changing initiatives being delivered with our health partners.

Thurrock is a place with a rich cultural heritage, which is often overlooked. With our cultural partners we are developing plans to enable all Thurrock residents to enjoy and benefit from high quality arts and heritage activity, creating a strong pride in place, better well-being and economic prosperity.

The table below demonstrates the conversion of live births in Thurrock to the actual take up of school places. This is showing a slight increase in reception numbers. This data enables Thurrock to project the place requirements for future years using the birth data available.

Year of Birth	2007-08	2008-09	2009-10	2010-11	2011-12	2012-13	2013/14	2014/15
Number of live births in the authority	2,261	2,367	2,330	2,454	2,433	2,359	2,343	2,474
Year entering school at 4+	2012-13	2013-14	2014-15	2015-16	2016-17	2017-18	2018-19	2019-20
Number of children admitted into reception	2,263	2,321	2,277	2,430	2,463	2,407	2,390	2,461
Historical uptake factor	100.09%	98.06%	97.73%	99.02%	101.23%	102.03%	102.01%	99.47%

The graph below highlights that Thurrock’s live births after reaching a peak of 2,505 in 2015/16 are now seeing a slight decrease.



## SCHOOLS AND PLANNING AREAS

### Schools

There are currently 39 Primary schools, 11 Secondary schools and 2 Special Schools in Thurrock.

	Academies	Community	Voluntary	Voluntary	Foundation	Free
		Schools	Aided Schools	Controlled		School
Primary Schools	35	2	0	0	0	2
Secondary Schools	10	0	1	0	0	0
Special Schools	2	0	0	0	0	0

Full details of the schools and the oversubscription criteria applied to each one is available within the Council's School Admissions Primary and Secondary Booklets which can be found at <https://www.thurrock.gov.uk/school-admissions>. These booklets contain information on how to make an application for a school place.

Each Academy, Free School and Voluntary Aided-School is its own Admissions Authority. The Council is the Admissions Authority for Community Schools and Voluntary Controlled Schools. In respect of Voluntary Aided Schools the governing body of the school determines admission arrangements. For Academies and Free Schools, the relevant Academy Trust is the Admission Authority. Each individual Admissions Authority applies its own oversubscription criteria to applications and determines which applicants to offer places to.

Applications for Thurrock Schools are made via the co-ordinated admissions process which is administered by the Council.



# PUPIL PLACE PLANNING AREAS

Thurrock Council has 8 schools planning areas, 5 for Primary and 3 for Secondary.

The Primary planning areas are detailed in the table below:-

## Primary Planning Areas

<p style="text-align: center;"><b>Aveley, Ockendon and Purfleet</b></p> <ul style="list-style-type: none"> <li>• Aveley Primary</li> <li>• Benyon Primary</li> <li>• Bonnygate Primary</li> <li>• Dilkes Academy</li> <li>• Holy Cross Catholic Primary</li> <li>• Kenningtons Primary Academy</li> <li>• Purfleet Primary Academy</li> <li>• Shaw Primary Academy</li> <li>• Somers Heath Primary</li> </ul>	<p style="text-align: center;"><b>Grays</b></p> <ul style="list-style-type: none"> <li>• Belmont Castle Academy</li> <li>• Deneholm Primary</li> <li>• Harris Primary Academy Chafford Hundred</li> <li>• Harris Primary Academy Mayflower</li> <li>• Little Thurrock Primary</li> <li>• Quarry Hill Academy</li> <li>• St Thomas of Canterbury Catholic Primary</li> <li>• Stifford Clays Primary</li> <li>• Thameside Primary</li> <li>• Tudor Court Primary</li> <li>• Warren Primary</li> <li>• West Thurrock Academy</li> </ul>
<p style="text-align: center;"><b>Tilbury</b></p> <ul style="list-style-type: none"> <li>• Chadwell St Mary Primary</li> <li>• East Tilbury Primary &amp; Nursery</li> <li>• The Gateway Primary Free</li> <li>• Herringham Primary Academy</li> <li>• Lansdowne Primary Academy</li> <li>• St Mary’s Catholic Primary</li> <li>• Tilbury Pioneer Academy</li> <li>• Woodside Academy</li> </ul>	<p style="text-align: center;"><b>Corringham and Stanford-Le-Hope</b></p> <ul style="list-style-type: none"> <li>• Abbots Hall Primary Academy</li> <li>• Arthur Bugler Primary</li> <li>• ORTU Corringham Primary</li> <li>• Giffards Primary</li> <li>• Graham James Primary Academy</li> <li>• St Joseph’s Catholic Primary</li> <li>• Stanford-le-Hope Primary</li> </ul>
<p style="text-align: center;"><b>Rural areas</b></p> <ul style="list-style-type: none"> <li>• Bulphan C of E Academy</li> <li>• Horndon on the Hill C of E Primary</li> <li>• Orsett C of E Primary Academy</li> </ul>	

The planning areas for the Primary phase are shown on the map in Annex 5. The Primary reception forecast summary is shown in Annex 7.

The Primary phase forecast whole school summary is shown in Annex 8.



The Secondary planning areas are detailed in the table below:-

**Secondary Planning Areas**

<p><b>West</b></p> <ul style="list-style-type: none"> <li>• Harris Academy Ockendon</li> <li>• Ormiston Park Academy</li> <li>• Harris Academy Riverside</li> </ul>	<p><b>Central</b></p> <ul style="list-style-type: none"> <li>• The Gateway Academy</li> <li>• Grays Convent High School</li> <li>• The Hathaway Academy</li> <li>• Harris Academy Chafford Hundred</li> <li>• William Edwards School</li> </ul>
<p><b>East</b></p> <ul style="list-style-type: none"> <li>• ORTU Gable Hall</li> <li>• ORTU Hassenbrook Academy</li> <li>• St Clere’s School</li> </ul>	

The planning areas for the Secondary phase are shown on the map in Annex 6.

The Secondary Year 7 summary forecast is shown in Annex 9.

The Secondary phase whole school summary forecast is shown in Annex 10.

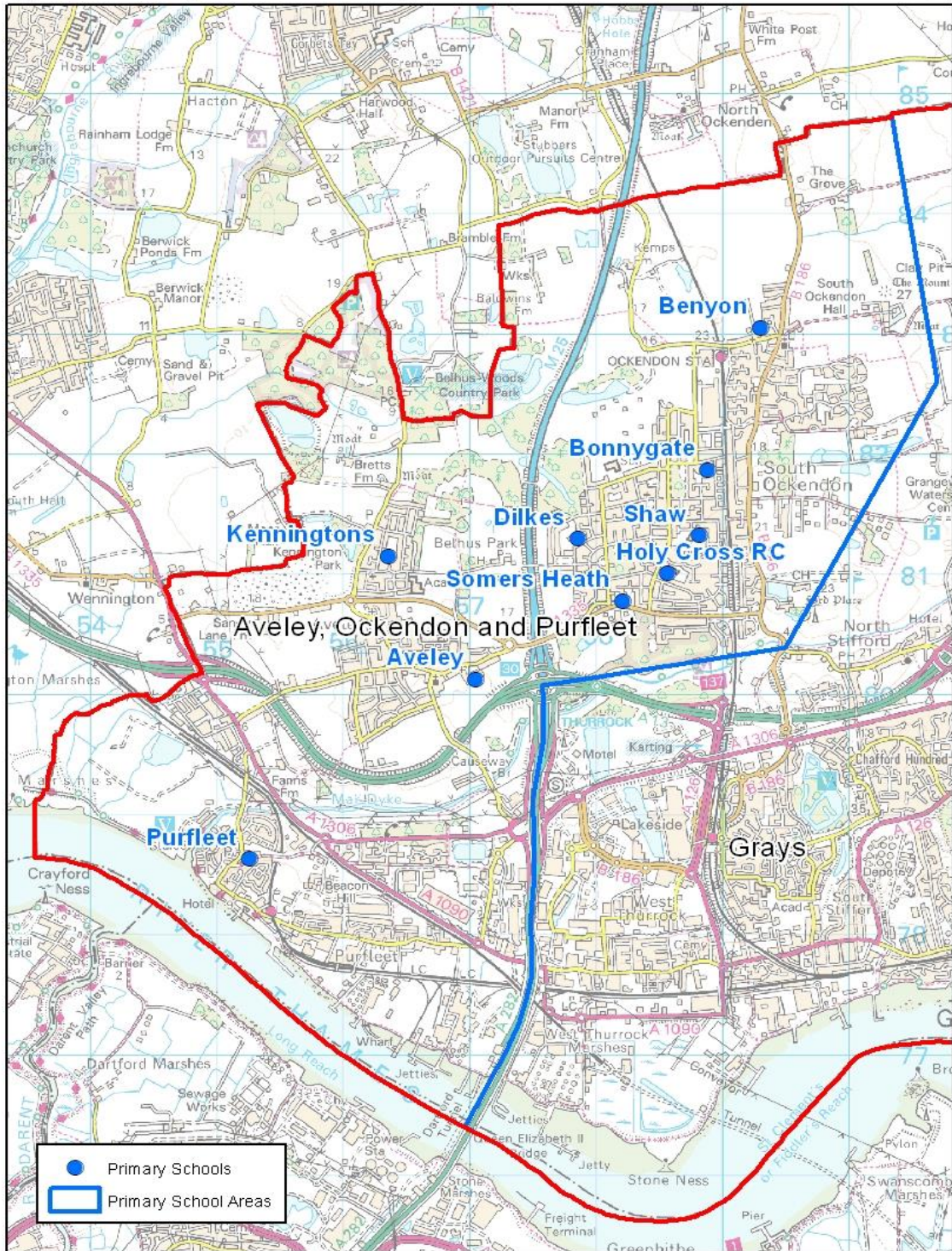
## **PRIMARY FORECASTS**

Pupil place projections for each of the planning areas are set out in the following pages.

Reception intake September 2019 was the first year of our highest birth rate, therefore it is predicted that the next three years will show an increase in a reception intake and subsequent year groups.

The whole school projections for each primary school planning area have been calculated using birth data which in recent years was showing an increase five years later when pupils reach school age. These are projected to calculate reception numbers along with the actual number of children on roll in the schools in the October 2019 census, adding the pupil yield from housing developments and then adding an additional element of places to cater for in-year admissions. This degree of additional places is required to enable schools to absorb the number of pupils we anticipate will arrive in Thurrock from elsewhere in the UK and abroad in the September 2020/21 academic year and beyond. The impact of inward migration will be closely monitored and forecasts adjusted accordingly.

Full details of the methodology used to determine the pupil place forecasts for the primary phase are set out in Annex 1.



© Crown copyright and database rights 2015 Ordnance Survey 100025457

Scale 1:55,000

## Aveley, Ockendon & Purfleet

Aveley, Ockendon & Purfleet		RECEPTION FORECAST				
School	PAN	Sep-20	Sep-21	Sep-22	Sep-23	Sep-24
Aveley	60	64	64	69	74	69
Benyon	60	24	27	28	47	33
Bonnygate	60	63	64	66	62	64
Dilkes	60	58	54	65	45	55
Holy Cross	30	30	30	30	30	30
Kenningtons	60	73	95	72	111	90
Purfleet	90	90	75	57	71	72
Shaw	60	69	58	44	55	54
Somers Heath	60	62	62	73	60	65
In Year Admissions		8	8	8	8	8
	<b>540</b>	<b>541</b>	<b>537</b>	<b>512</b>	<b>563</b>	<b>540</b>

Aveley, Ockendon & Purfleet		WHOLE SCHOOL FORECAST				
School	PAN	Sep-20	Sep-21	Sep-22	Sep-23	Sep-24
Aveley	420	459	479	481	477	488
Benyon	420	246	257	261	285	282
Bonnygate	420	438	456	468	478	486
Dilkes	420	419	413	416	401	398
Holy Cross	210	209	209	209	210	210
Kenningtons	420	441	461	459	519	549
Purfleet	630	579	585	571	596	607
Shaw	420	421	419	403	400	398
Somers Heath	420	389	421	436	436	441
In Year Admissions		54	55	56	57	58
	<b>3,780</b>	<b>3,654</b>	<b>3,753</b>	<b>3,759</b>	<b>3,857</b>	<b>3,915</b>

*Red Cells indicate where projected numbers exceed the Published Admission Number (PAN)*

Benyon Primary has increased to a two form entry.

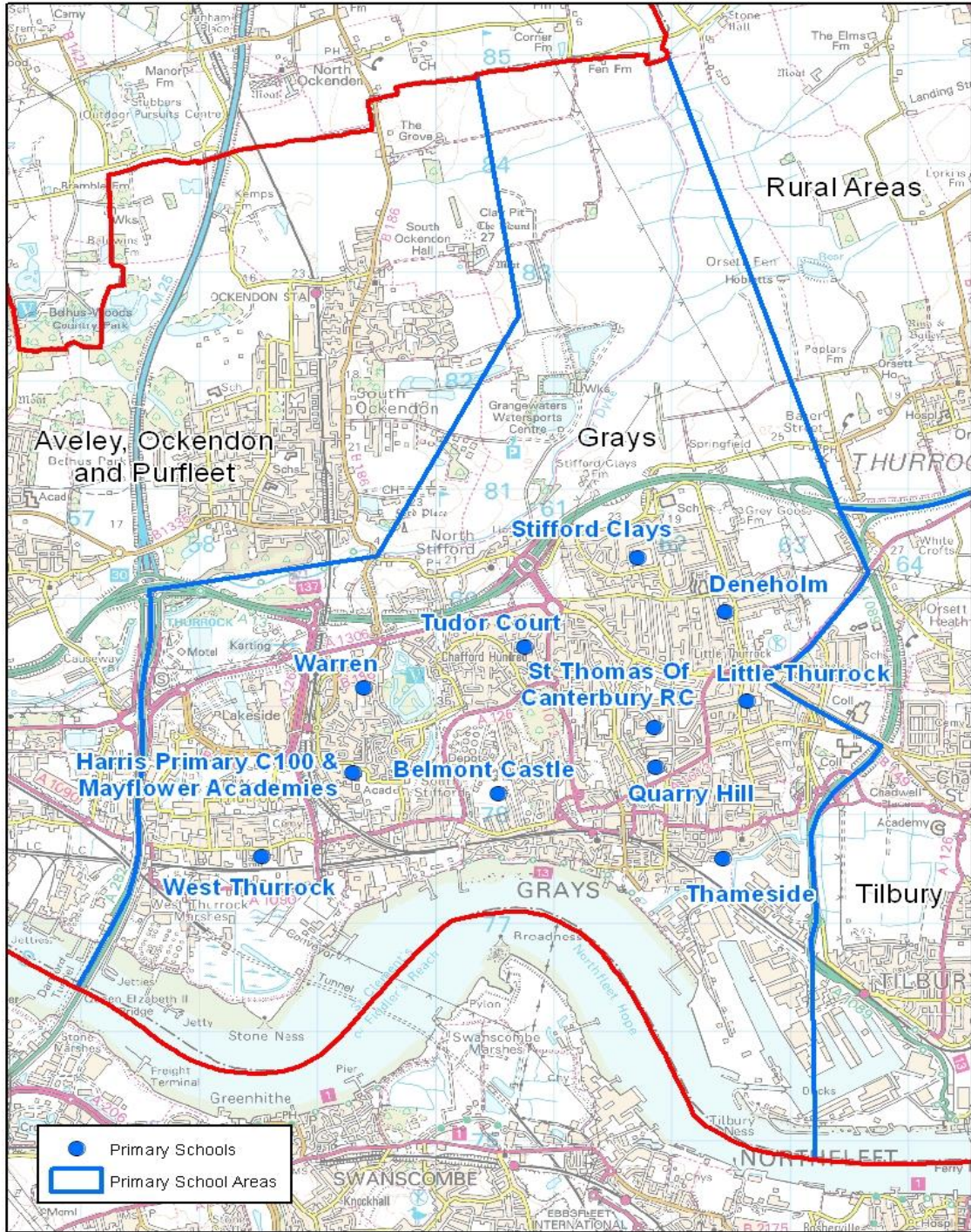
The following schools have increased their class base by adding the following bulge classes to the year groups as detailed below:

Aveley Primary Year 3 and Year 4, Benyon Primary Reception and Year 2, Kenningtons Primary Academy Year 4 and Year 5.

Please note that the bulge classes are not included in the Published Admission Number (PAN).

The above forecasts include the child yield exceeding 20 pupils from the following developments at: Aveley Football Ground, Mill Road, Former Ford Factory Arisdale Avenue, Aveley village extension south of B1335 and the Purfleet Centre.





© Crown copyright and database rights 2015 Ordnance Survey 100025457

Scale 1:60,000

## Grays

Grays		RECEPTION FORECAST				
School	PAN	Sep-20	Sep-21	Sep-22	Sep-23	Sep-24
Belmont Castle	90	95	90	83	83	87
Deneholm	60	37	54	58	56	54
Harris Chafford Hundred	90	74	89	69	66	75
Harris Mayflower	150	111	130	103	102	112
Little Thurrock	90	90	98	121	83	99
Quarry Hill	60	61	60	73	73	68
St Thomas'	90	83	83	83	83	83
Stifford Clays	90	103	71	66	84	77
Thameside	120	116	96	102	95	100
Tudor Court	90	98	87	80	89	87
Warren	60	56	37	35	47	42
West Thurrock	60	58	59	54	52	55
In Year Admissions		15	14	14	14	14
	1050	997	968	941	927	953

Grays		WHOLE SCHOOL FORECAST				
School	PAN	Sep-20	Sep-21	Sep-22	Sep-23	Sep-24
Belmont Castle	630	659	681	696	709	720
Deneholm	420	386	384	382	380	377
Harris Chafford Hundred	630	603	603	584	560	548
Harris Mayflower	1,050	823	863	876	836	828
Little Thurrock	630	618	627	660	655	669
Quarry Hill	420	413	417	436	458	469
St Thomas'	630	605	599	592	586	579
Stifford Clays	630	617	600	576	570	560
Thameside	840	772	785	779	763	760
Tudor Court	630	777	751	712	688	659
Warren	420	416	394	380	381	390
West Thurrock	420	415	434	448	468	484
In Year Admissions		107	107	107	106	106
	7,350	7,211	7,245	7,228	7,160	7,149

*Red Cells indicate where projected numbers exceed the Published Admission Number (PAN)*

Tudor Court have reduced their intake to a three form entry.

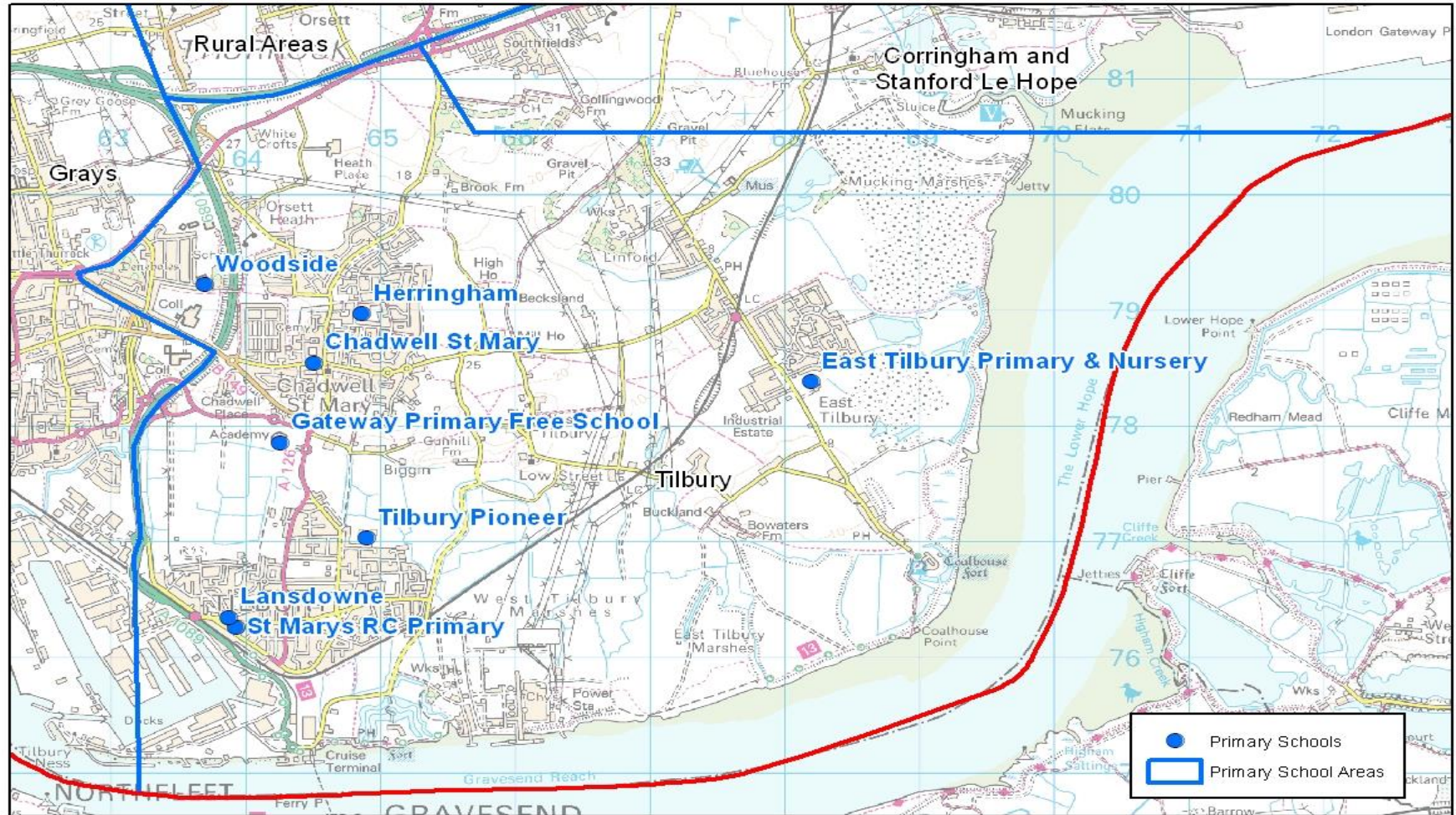
The following schools have increased their class base by adding the following bulge classes to the year groups as detailed below:

Belmont Castle Year 5, Quarry Hill Academy Year 6, Stifford Clays Primary Year 6, and West Thurrock Year 6.

Please note that the bulge classes are not included in the Published Admission Number (PAN).

The above forecasts include the child yield exceeding 20 pupils from the following developments at: William Ball Site Gumley Road, Grays Gas Holder site London Road, Land South of West Thurrock Way and proposed developments land north of Rosebery Road, Castle Road and Belmont Road, Arena Essex and Land Part of Little Thurrock Marshes, Thurrock Park Way





© Crown copyright and database rights 2015 Ordnance Survey 100026457

Scale 1:55,000

## Tilbury

Tilbury		RECEPTION FORECAST				
School	PAN	Sep-20	Sep-21	Sep-22	Sep-23	Sep-24
Chadwell St Mary	30	37	28	30	25	29
East Tilbury	90	100	106	139	142	125
Gateway	60	69	48	59	55	56
Herringham	60	46	57	54	60	56
Lansdowne	90	81	77	73	72	75
St Mary's	30	30	30	30	30	30
Tilbury Pioneer	60	79	62	80	64	70
Woodside	90	115	112	100	116	110
In Year Admissions		8	8	8	8	8
	<b>510</b>	<b>565</b>	<b>528</b>	<b>573</b>	<b>572</b>	<b>559</b>

Tilbury		WHOLE SCHOOL FORECAST				
School	PAN	Sep-20	Sep-21	Sep-22	Sep-23	Sep-24
Chadwell St Mary	210	216	214	215	209	208
East Tilbury	630	684	714	765	800	837
Gateway	420	415	412	413	408	406
Herringham	420	401	410	416	440	458
Lansdowne	630	617	611	598	585	572
St Mary's	210	211	211	211	211	210
Tilbury Pioneer	420	460	475	497	475	479
Woodside	630	689	726	737	763	783
In Year Admissions		55	57	58	58	59
	<b>3,570</b>	<b>3,747</b>	<b>3,829</b>	<b>3,909</b>	<b>3,948</b>	<b>4,011</b>

*Red Cells indicate where projected numbers exceed the Published Admission Number (PAN)*

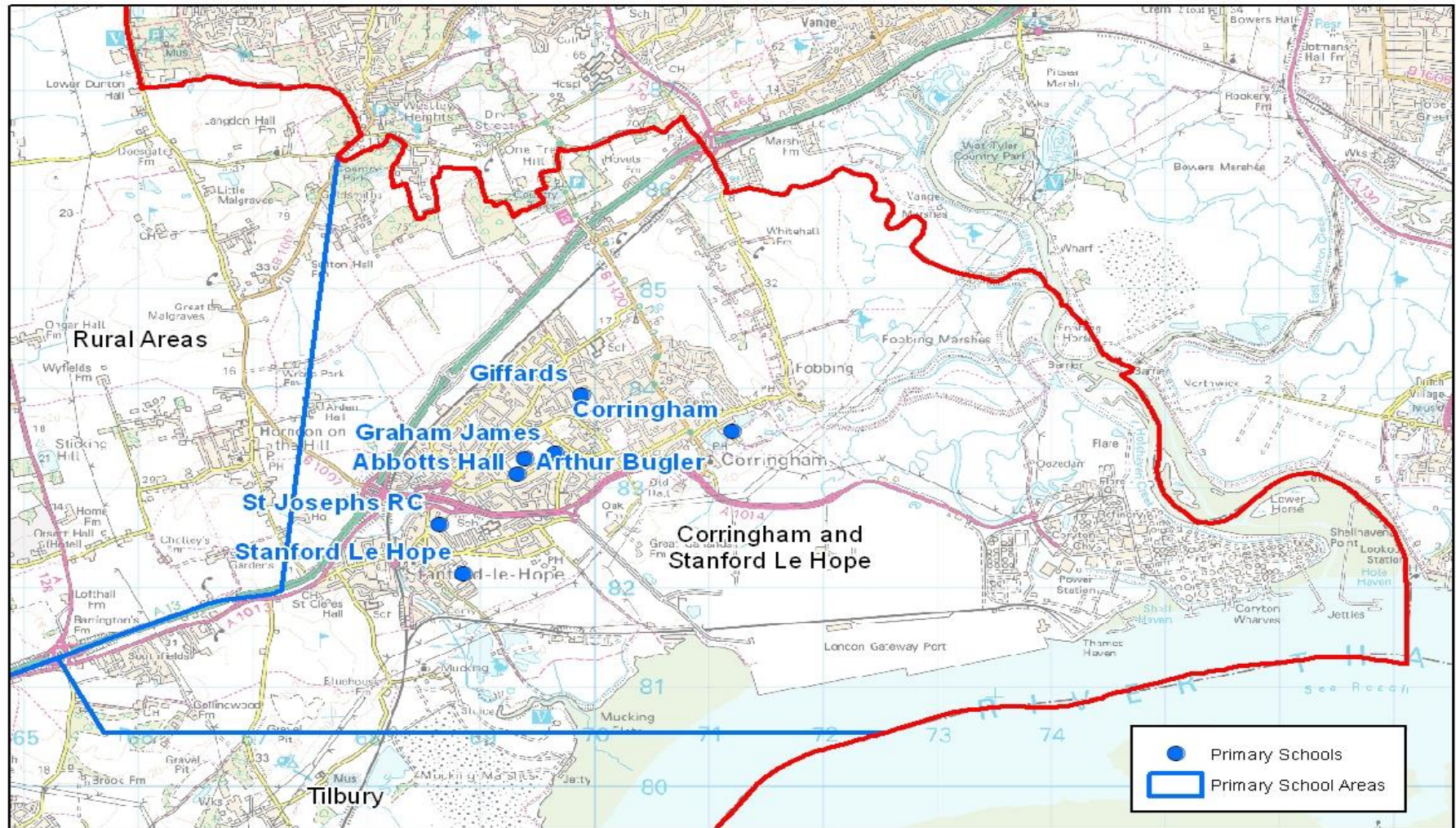
The following schools have increased their class base by adding the following bulge classes to the year groups as detailed below:

East Tilbury Year 3, Year 4 and Year 6. Tilbury Pioneer Year 2 and Year 3.

Please note that the bulge classes are not included in the Published Admission Number (PAN).

The above forecasts include the child yield exceeding 20 pupils from the following developments at: Bata Field land adjacent Bata Avenue and to Rear of 201-251 Princess Margaret Road, Thurrock Woodview Campus and Former St Chads School and the proposed development at Star Industrial Estate Linford Road.





## Corringham and Stanford Le Hope

Corringham & Stanford le Hope		RECEPTION FORECAST				
School	PAN	Sep-20	Sep-21	Sep-22	Sep-23	Sep-24
Abbots Hall	30	47	34	34	29	34
Arthur Bugler	60	65	47	57	57	55
Corringham	60	43	72	56	81	66
Giffards	60	48	84	64	71	70
Graham James	60	64	55	94	59	69
St Joseph's	30	29	29	29	29	29
Stanford-le-Hope	60	52	75	63	68	67
In Year Admissions		5	6	6	6	6
	<b>360</b>	<b>353</b>	<b>402</b>	<b>403</b>	<b>400</b>	<b>396</b>

Corringham & Stanford le Hope		WHOLE SCHOOL FORECAST				
School	PAN	Sep-20	Sep-21	Sep-22	Sep-23	Sep-24
Abbots Hall	210	265	270	275	254	258
Arthur Bugler	420	423	410	407	404	399
Corringham	420	411	424	419	437	448
Giffards	420	433	457	434	443	458
Graham James	420	422	419	454	453	463
St Joseph's	210	217	206	206	205	204
Stanford-le-Hope	420	412	447	467	503	535
In Year Admissions		39	39	40	40	41
	<b>2,520</b>	<b>2,622</b>	<b>2,672</b>	<b>2,702</b>	<b>2,739</b>	<b>2,806</b>

*Red Cells indicate where projected numbers exceed the Published Admission Number (PAN)*

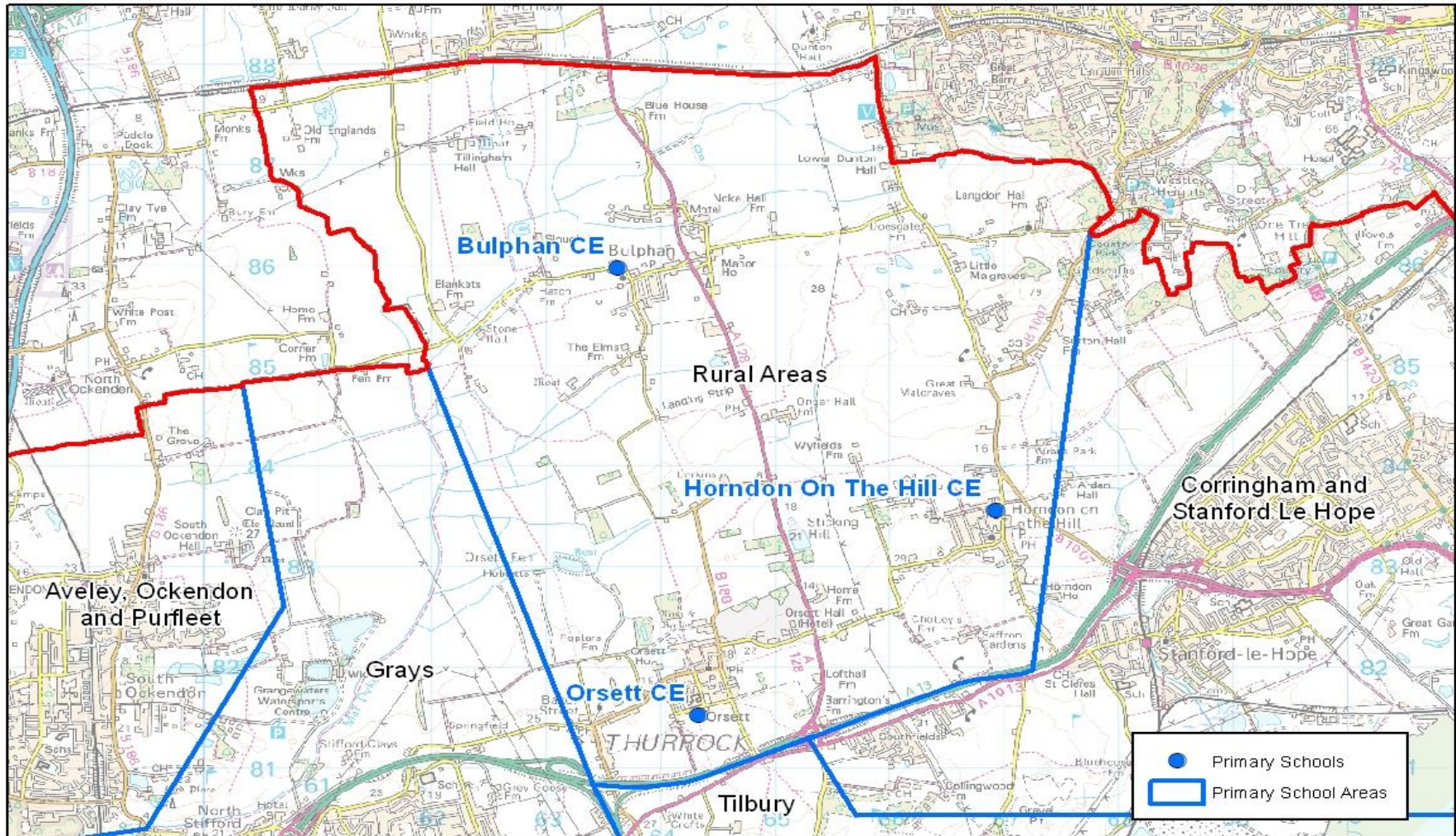
The following schools have increased their class base by adding the following bulge classes to the year groups as detailed below:

Abbots Hall Primary Academy Reception and Year 3 and Giffards Primary Year 4.

Please note that the bulge classes are not included in the Published Admission Number (PAN).

The above forecasts include the child yield exceeding 20 pupils from the development at: Land adjacent St Cleres School, railway line and Butts Lane and the proposed developments at: Land adjacent to railway line, Manorway and west of Victoria Road and Land Rear of Caldwell Road, Kingsman Road & Adj. to A1013.





## Rural Area

Rural		RECEPTION FORECAST				
School	PAN	Sep-20	Sep-21	Sep-22	Sep-23	Sep-24
Bulphan	12	14	20	20	18	19
Horndon-on-the-Hill	30	20	23	26	15	21
Orsett	30	50	40	29	22	32
In Year Admissions		1	1	1	1	1
	72	85	84	76	56	73

Rural		WHOLE SCHOOL FORECAST				
School	PAN	Sep-20	Sep-21	Sep-22	Sep-23	Sep-24
Bulphan	84	87	102	112	127	144
Horndon-on-the-Hill	210	184	178	175	162	161
Orsett	210	238	247	244	235	239
In Year Admissions		8	8	8	8	8
	504	517	535	539	532	552

Red Cells indicate where projected numbers exceed the Published Admission Number (PAN)

There are no class base increases in this planning area.

The above forecasts include the child yield exceeding 20 pupils from the development at: Little Malgraves Farm, Lower Dunton Road.

### Primary Forecast Summary

Reception intake September 2019 will be the first year of our highest birth rate, therefore it is predicted that the next 3 years will show an increase in a reception intake and subsequent year groups.

The pressure in the primary phase is being managed and will continue to be regularly monitored closely. The inward migration experienced in recent years had a more significant impact on primary places than secondary places. This may have been because we had capacity in our secondary schools which could absorb the newcomers or it may be that the families arriving in Thurrock had younger children.

Thurrock Primary whole school numbers have increased by 20% since Autumn 2012 which equates to a 2,908 pupil increase. However, the autumn school census for October 2018 and 2019 is showing a significant decrease in the amount of extra primary pupils when compared to the last five years.

## SECONDARY FORECASTS

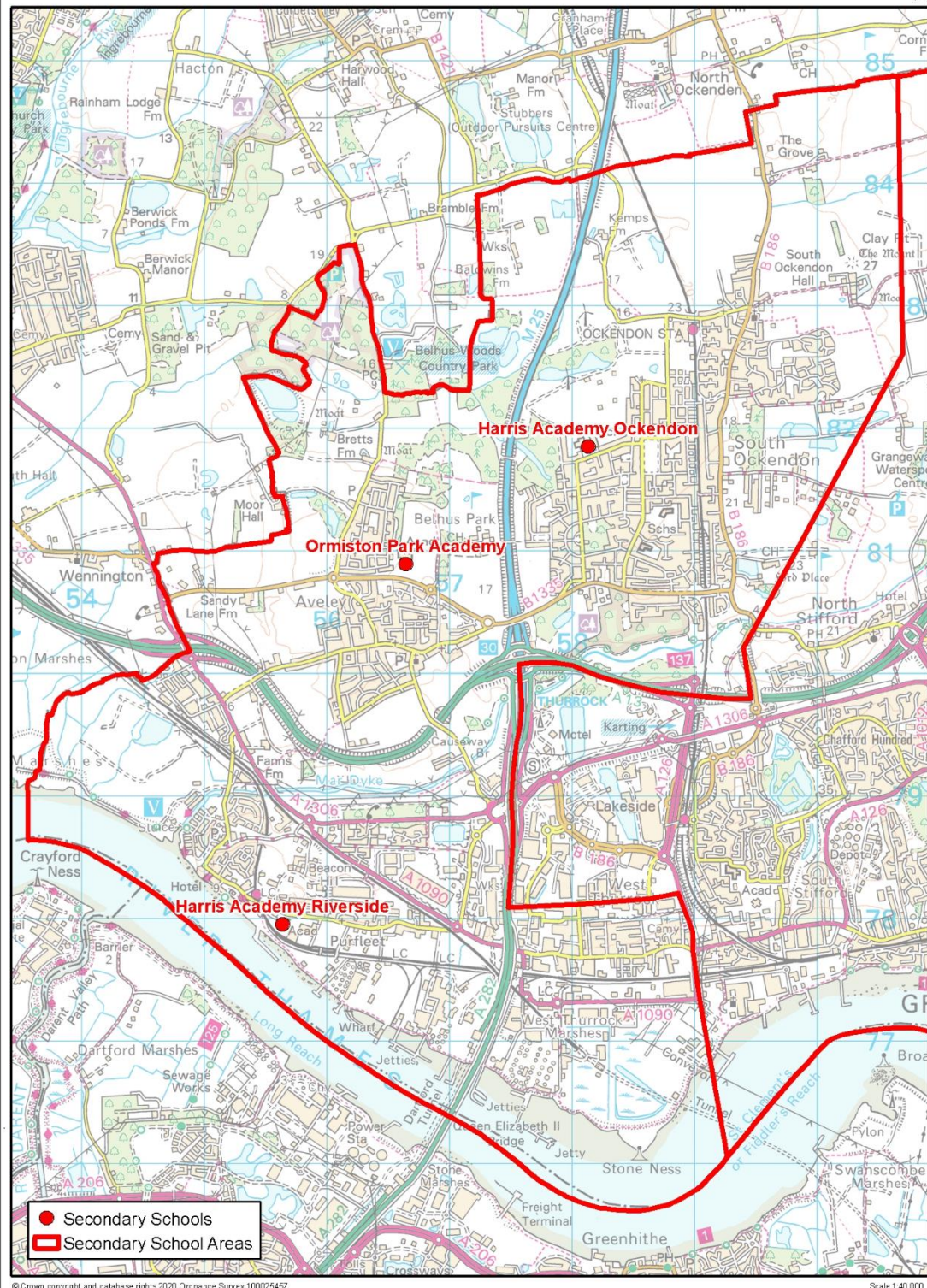
The primary increase is becoming noticeable when pupils are moving into Year 7 and beyond.

Whole school forecasts for each secondary planning area has been calculated using formulae to calculate the transition rate from year 6 to year 7 and the current numbers on roll in schools on the census data from October 2019 and by also adding the pupil yield from any developments and then adding an additional element of places to cater for in-year admissions. This degree of additional places is required to enable schools to absorb the number of pupils we anticipate will arrive in Thurrock from elsewhere in the UK and abroad in the September 2020/21 academic year and beyond. The impact of inward migration will be closely monitored and forecasts adjusted accordingly.

Full details of the methodology used to determine the pupil place forecasts for the secondary phase are set out in Annex 1.

Thames Park Free School and Orsett Heath Free School will open in September 2020. Each school will open to 120 pupils at each site. These sites are temporary whilst their new permanent sites are under construction. This will affect the Secondary year 7 forecast and those pupil admission numbers will not be included until next year's Pupil Place Plan.





## West Planning Area

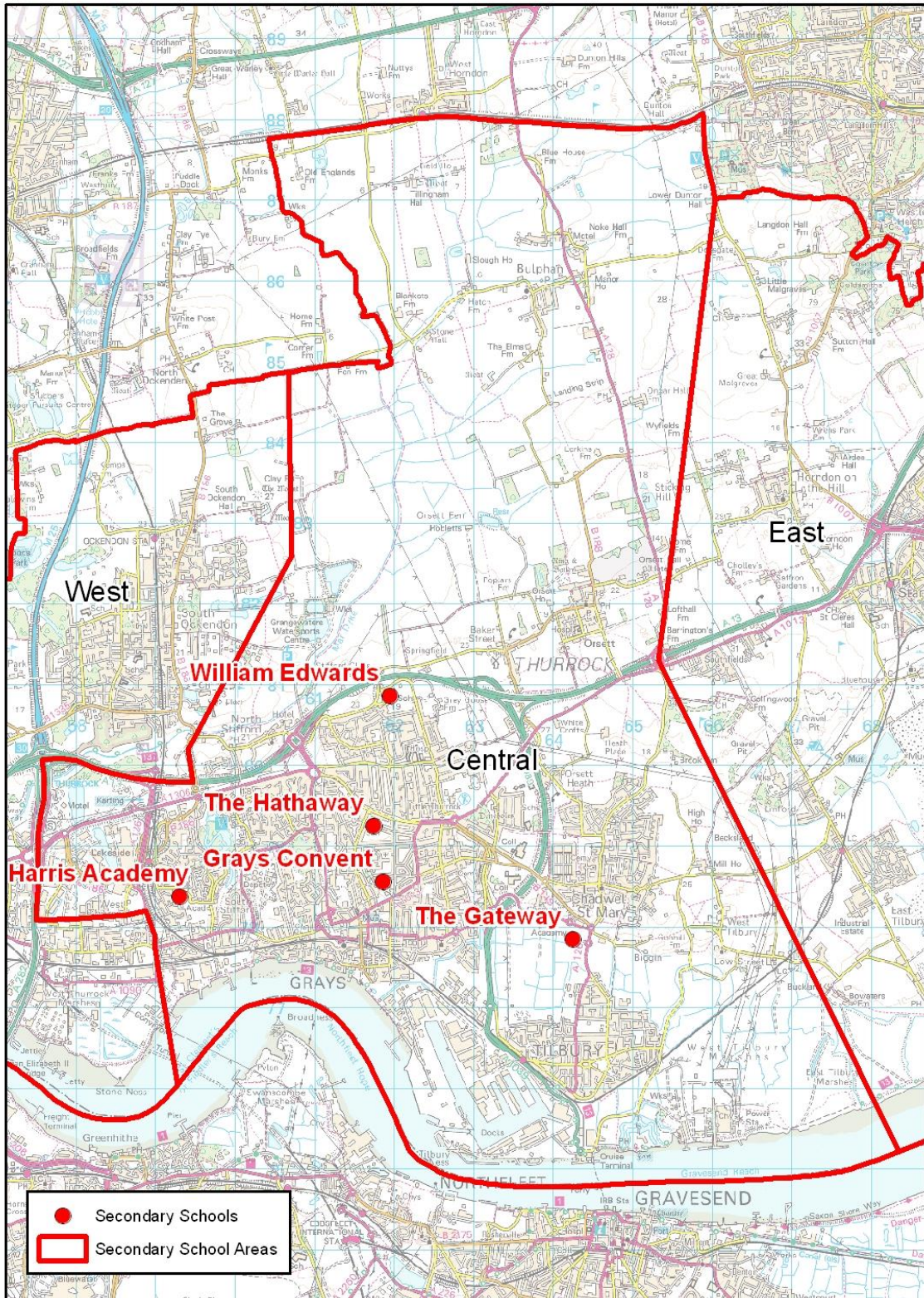
West Planning Area	YEAR 7 FORECAST					
School	PAN	Sep-20	Sep-21	Sep-22	Sep-23	Sep-24
Harris Academy Riverside	180	189	185	195	198	190
Ormiston Park Academy	180	139	137	144	147	140
Harris Academy Ockendon	240	257	252	266	270	259
In Year Admissions		9	9	9	9	9
	<b>600</b>	<b>594</b>	<b>583</b>	<b>614</b>	<b>624</b>	<b>598</b>

West Planning Area	WHOLE SCHOOL FORECAST					
School	PAN	Sep-20	Sep-21	Sep-22	Sep-23	Sep-24
Harris Academy Riverside	900	638	828	904	987	999
Ormiston Park Academy	900	689	694	740	737	744
Harris Academy Ockendon	1,200	1,222	1,258	1,300	1,339	1,356
In Year Admissions		38	42	44	46	46
	<b>3,000</b>	<b>2,587</b>	<b>2,822</b>	<b>2,988</b>	<b>3,109</b>	<b>3,145</b>

*Red Cells indicate where projected numbers exceed the Published Admission Number (PAN)*

The above forecasts include the child yield exceeding 20 pupils from the developments at: Aveley Football Ground, Mill Road, Former Ford Factory Arisdale Avenue, Aveley village extension south of B1335, Land South of West Thurrock Way and the Purfleet Centre.





© Crown copyright and database rights 2015 Ordnance Survey 100025457

Scale 1:85,000

## Central Planning Area

Central Planning Area	YEAR 7 FORECAST					
School	PAN	Sep-20	Sep-21	Sep-22	Sep-23	Sep-24
Grays Convent	124	130	128	134	137	131
Harris Academy Chafford Hundred	180	189	185	195	198	190
The Gateway Academy	215	225	221	233	237	227
The Hathaway Academy	180	185	182	192	195	187
William Edwards	250	261	256	270	274	263
In Year Admissions		15	15	15	16	15
	<b>949</b>	<b>1,005</b>	<b>987</b>	<b>1,039</b>	<b>1,057</b>	<b>1,013</b>

Central Planning Area	WHOLE SCHOOL FORECAST					
School	PAN	Sep-20	Sep-21	Sep-22	Sep-23	Sep-24
Grays Convent	620	650	655	666	679	660
Harris Academy Chafford Hundred	900	1,001	974	1,005	1,030	1,034
The Gateway Academy	1,075	1,110	1,143	1,178	1,217	1,213
The Hathaway Academy	900	890	912	956	994	1,016
William Edwards	1,250	1,296	1,301	1,325	1,324	1,340
In Year Admissions		74	75	77	79	79
	<b>4,745</b>	<b>5,021</b>	<b>5,060</b>	<b>5,207</b>	<b>5,323</b>	<b>5,342</b>

*Red Cells indicate where projected numbers exceed the Published Admission Number (PAN)*

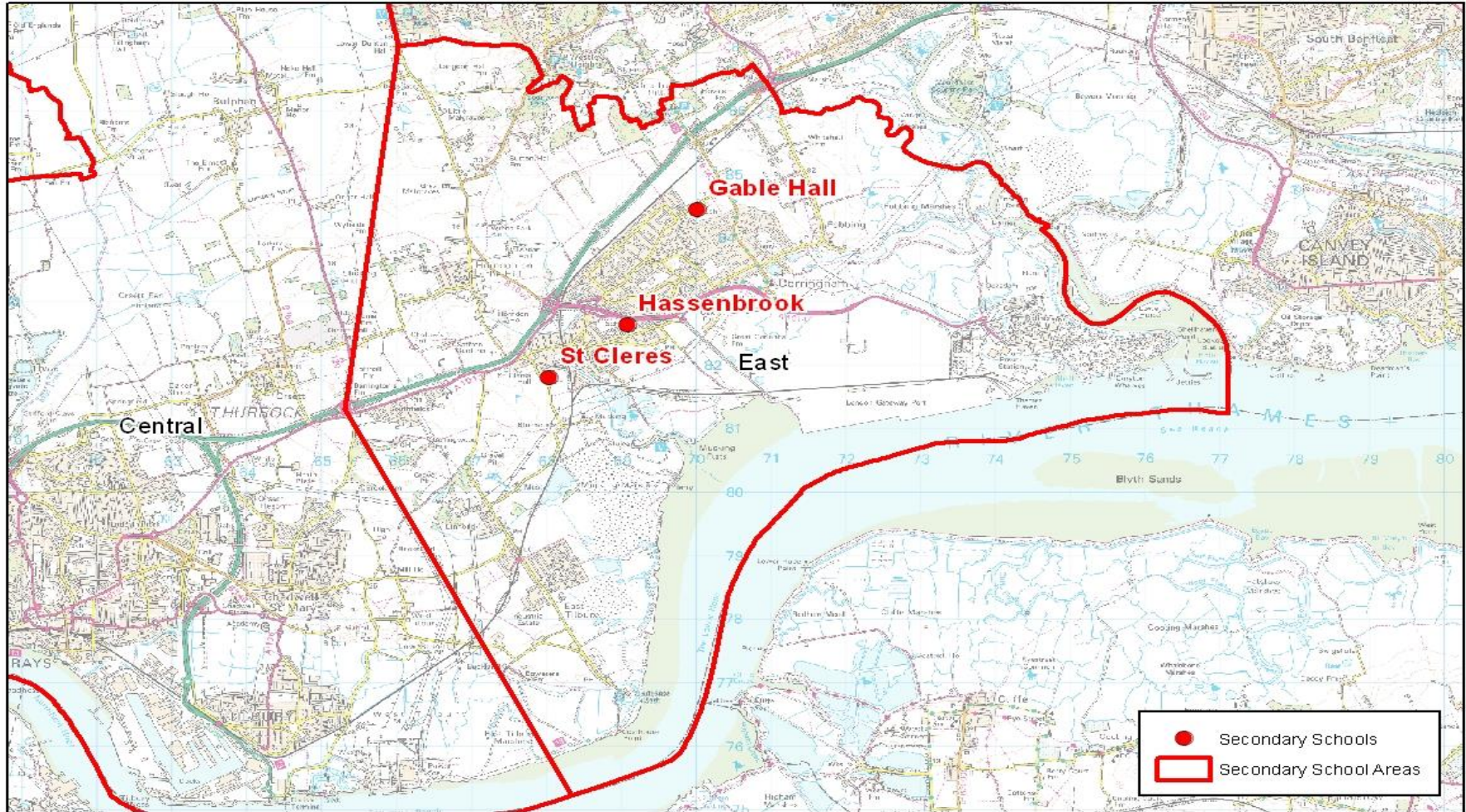
The following schools have increased their class base by adding the following bulge classes to the year groups as detailed below:

Grays Convent Year 7, Harris Academy Chafford Hundred Year 7 and Year 10, William Edwards Year 8.

The above forecasts include the child yield exceeding 20 pupils from the following developments at: Thurrock Woodview Campus, William Ball Site, Gumley Road, Grays Gas Holder Site, London Road, Former St Chads School and the proposed developments at Star Industrial Estate, Linford Road, Land Part of Little Thurrock Marshes, Thurrock Park and Arena Essex.

The forecast above does not include the two new free schools Orsett Heath Academy and Thames Park Academy. These schools cannot be part of the Local Authorities co-ordination in the first year of opening. They will be included in next year's pupil place plan. Therefore the tables above do not give an accurate forecast as these two schools are due to open in temporary accommodation, initially with a Published Admission Number (PAN) of 120 spaces each starting in Year 7 Sept 2020.





## East Planning Area

East Planning Area	YEAR 7 FORECAST					
School	PAN	Sep-20	Sep-21	Sep-22	Sep-23	Sep-24
Gable Hall	272	278	273	287	292	280
Hassenbrook Academy	150	123	120	127	129	124
St Clere's	261	275	271	285	290	278
In Year Admissions		10	10	10	11	10
	683	686	674	709	722	692

East Planning Area	WHOLE SCHOOL FORECAST					
School	PAN	Sep-20	Sep-21	Sep-22	Sep-23	Sep-24
Gable Hall	1,360	1,297	1,315	1,348	1,395	1,410
Hassenbrook Academy	750	521	529	578	618	625
St Clere's	1,305	1,391	1,454	1,519	1,450	1,474
In Year Admissions		48	49	52	52	53
	3,415	3,257	3,347	3,497	3,515	3,562

*Red Cells indicate where projected numbers exceed the Published Admission Number (PAN)*

The following schools have increased their class base by adding the following bulge classes to the year groups as detailed below:

Ortu Hassenbrook Year 7 and St Clere's Year 7 and Year 8 x 5 form entry.

The above forecasts include the child yield exceeding 20 pupils from the following developments at: Land adjacent St Clere's School, railway line and Butts Lane, and proposed developments at adjacent to railway line, Manorway and West of Victoria Road and Bata field land adjacent Bata Avenue and to rear of 201 to 251 Princess Margaret Road.

### Secondary Forecast Summary

With the number of primary pupils moving into the secondary sector the demand for secondary places is increasing and will continue to do so over the next few years.

Two new Free Schools will open in temporary accommodation from September 2020 with initially a total of 240 places across both schools.

## COUNCIL WIDE ISSUES

The two main factors for pupil increases in both the primary and secondary phases are the increase in birth rate and the amount of in-year applications. The table below details the increases of in-year applications outside the normal admission rounds.

Academic Year	No. of children applying for a primary/secondary school place outside of the normal admission round who arrived in Thurrock from abroad.	No. of children applying for a primary/secondary school place outside of the normal admission round who arrived in Thurrock from elsewhere in the UK.	Total
2013/14	310	751	1061
2014/15	382	949	1331
2015/16	311	990	1301
2016/17	250	1096	1346
2017/18	250	1035	1285
2018/19	191	1097	1288
2019/20	162	785	947
* NB. 2019/20 figures are for 5 months			

Planning for the children arriving in Thurrock is difficult as we do not know who they are, how old they are, and therefore, which year groups they will apply for until they make contact with School Admissions. Some may require Reception and Year 7 places, but many will require places in other year groups. This introduces the potential of bulge classes in year groups other than Reception and Year 7 as we have experienced in recent years.

With the unpredictable demand for places from outside of Thurrock an additional element of pupil places has been added to each planning area within Thurrock.



## **ANNEX 1: PUPIL PLACE FORECASTING METHODOLOGY**

The statutory obligation for all local Councils is to provide sufficient school places. Thurrock Council regularly reviews all data, trends and builds a robust analysis of pupil planning to ensure a place for all pupils that live in Thurrock either at normal admission rounds or the unforeseen “in-year” admissions.

Thurrock experiences high levels of in-year applications which has put pressure on school places but with the excellent relationships we have with our Schools and Academies, Thurrock Council has been able to continue to meet this demand.

### **Primary Forecasts**

Thurrock Council uses live birth data provided by the National Health Service which forms the basis of calculating the place requirements four years later. This data contains post codes where the child lives which are then allocated to the nearest school in that area to calculate places required in that schools planning area.

Whole school forecasts are based on pupil census data; this provides actual pupil numbers in each year group. The number of children calculated from any building development is added to this to then calculate the number of school places required. An element of additional places is then added to cater for in-year admissions.

The building developments which produce over 20 pupils are taken into consideration in this edition of the PPP document and are listed under each planning area.

There is a project team made up of officers from various departments within the Council that play a part in PPP that meet monthly to review forecasts and any emerging issues. This allows the Council to be proactive in taking any necessary action to meet growing pressures for school places.

### **Secondary Forecasts**

With the high level of primary school places we have we know that these will feed through to our secondary schools. When calculating year 7 forecasts we use existing primary numbers. Using trend data we have used a transfer rate of 92%, meaning 8% of our children go outside of the Thurrock area. Thurrock has no secondary provision for Catholic boys who tend to move out of the area to attend a Catholic secondary school.

The Year 7 forecasts in this document were arrived at by examining the conversion rate from Year 6 to Year 7 for the last three years. This is the number of Thurrock Year 6 pupils who went on to become Year 7 students.

Having established the predicted number of Year 7 students for each school, we then address the child yield from housing developments.

We know the predicted number of children in each area that are likely to arise from developments but we cannot know how old they will be or which year group they will require. We therefore assume that some of the children generated by new developments will require primary places and some secondary places.

A number of places are therefore added to the whole school predictions for both primary and secondary at the schools in the areas where the development is due to take place. If a major development falls between two or more schools the child yield is divided between the schools.

## **Migration**

Thurrock is still experiencing increases in the number of children applying for a school place “In Year”. These arrivals during the academic year are difficult to manage as we do not know how many of each age group will arrive. The extent of inward migration in recent years indicates that 5% of school places are required in the primary phase and 3% are required in the secondary phase to ensure that the new arrivals can be accommodated.

The forecasts are not constrained by the physical accommodation available in the schools in the planning area and therefore indicate where pressure on places is likely to arise.

## **Pupil Migration**

Thurrock is a net exporter of pupils. The numbers both in and out of Thurrock for receptions and year 7 are listed below. The percentages listed are comparing these numbers against September 2019 actual on time applications numbers for reception and Year 7. These numbers only relate to the normal admission round.

### Primary

17 children are expected to come in to the LA +.5% by September 2020

77 children expected to go outside of the LA -3% by September 2020

### Secondary

51 children are expected to come in to the LA +2.3% by September 2020

251 children are expected to go outside of the LA – 10.2% by September 2020

## ANNEX 2: SPECIAL EDUCATIONAL NEEDS AND DISABILITY (SEND)

An education, health and care (EHC) plan is for children and young people aged up to 25 who need more support than is available through special educational needs support.

EHC plans identify educational, health and social needs and set out the additional support to meet those needs.

More information about special educational needs support and EHC plans is available at <https://www.thurrock.gov.uk/support-for-parents-and-carers-whose-children-have-special-needs-at-school/education-health-and-care>

[www.askthurrock.org.uk](http://www.askthurrock.org.uk)

### Provision

The Council has two special schools in the borough

School	Status	Needs Met	Age Range	Number of Places
Beacon Hill Academy	Academy	Severe and profound learning difficulties	3 to 19	75
Treetops Academy	Academy	Moderate learning difficulties and Autism	3 to 19	309

Beacon Hill Academy is a special school in South Ockendon for pupils who have severe and complex learning difficulties. Beacon Hill Post 16 provision caters for students with severe and profound and multiple learning difficulties from 16 to 19. This provision is located on the shared site with Treetops School in Grays. Students follow a personalised, accredited curriculum which promotes independence and transition to lifelong learning in the community.

Treetops School is a day special school academy in Grays for pupils between the ages of 3 and 19. The school caters for children and young people with moderate learning difficulties and Autism.

A new Special Free School has been agreed by the Education Funding Agency and is in development. The school will be located on a site adjacent to the existing Treetops School. The new Treetops Academy is planned to open in the academic year 2021/22.

The numbers of commissioned places in the Special Schools and Resource Bases are agreed between the Council and the schools on an annual basis. There is potential opportunity for additional places to be commissioned by the local authority as required and where possible during the academic year.

In addition to the special schools there are a number of mainstream schools with specialist provision in the Primary Sector:

School	Type of Provision	Age Range	Number of Places
Warren Primary	Resource base for pupils with hearing impairment	4-11	18
Stanford Le Hope Primary Academy	Resource nursery base for pupils with visual impairment	Nursery 3-5	3
Corringham Primary Academy	Resource base for pupils with speech and language difficulties	4-11	20
Harris Primary Academy Chafford Hundred	ICAN resource base for children with speech, language and communication needs	Nursery 3-5	5 *FTE
Dilkes Primary Academy	Resource base for pupils with social, emotional and mental health difficulties	4-11	10
Lansdowne Primary Academy	Resource base for pupils with social communication /moderate learning difficulties	4-11	8
Quarry Hill Academy	Resource base for pupils with social, emotional and mental health difficulties	4-11	10
East Tilbury Primary Academy	Inclusion Base	4-11	10
Thameside Primary Academy	Inclusion Base	4-11	10

\*Full Time Equivalent

Secondary phase schools with specialist provision are:

School	Type of Provision	Age Range	Number of Places
Ormiston Park Academy (ASCEND)	Resource base for pupils with social, emotional and mental health difficulties	11-19	30
Harris Academy Chafford Hundred	Resource Base for pupils with speech, language and communication needs and autism	11-19	20
St Clere's School	Resource Base for pupils with visual and hearing impairment.	11-19	17

Support is offered to students with special needs post 16 years at South Essex College, Palmers campus of USP College, and Thurrock Adult Community College.

## **ANNEX 3: PROVISION FOR PUPILS OUT OF SCHOOL**

Thurrock has developed two new Primary Inclusion Bases for pupils who have been permanently excluded or are at risk of permanent exclusion to provide direct support for these pupils and to support their re-integration into mainstream school. The two Inclusion Bases are at East Tilbury Primary School and Thameside Primary School, both of which are Primary Academies part of the Osborne Multi Academy Trust.

The Olive Alternative Provision Academy based in Tilbury provides a secondary offer for pupils because of exclusion, illness or other reasons, would not otherwise receive a suitable education. The service provides a range of different interventions to support young people to reengage with mainstream provision.

Admission to the service is by referral only. All referrals are made via the Council's Access and Inclusion Service.

Further information on the Olive AP Academy can be obtained from the Council's website.

## ANNEX 4: POST 16 PROVISION

The 2008 Education Act raised the age of participation for young people in England. Those born on or after 1<sup>st</sup> September 1997 must remain in some form of education or training until their 18<sup>th</sup> birthday. This may be:

- full time education at school or college,
- an apprenticeship or traineeship,
- part-time education or training as well as being employed, self-employed or volunteering for 20 hours per week or more.

Thurrock Council works closely in partnership with schools and colleges and other providers to plan provision for post 16 education and training. Young people can pursue a wide range of both academic and vocational courses in a range of settings.

Five secondary schools in Thurrock currently offer post 16 education; Gable Hall, Hassenbrook and St Clere's schools form the Stanford and Corringham 6<sup>th</sup> Form consortium and between them provide a range of academic and vocational courses.

Harris Academy Ockendon Studio School and 6<sup>th</sup> form is a 14 to 19 school offering a range of academic qualifications in addition to work based training. Applications for work based training places in the Studio School should be made via the Council's school admissions team. There are currently 75 places in the Studio School.

Harris Academy Chafford Hundred and Harris Riverside offers a 6<sup>th</sup> form provision which has a range of academic and vocational opportunities for young people, information on all the courses is available via the schools website.

The table below provides the number of students in Thurrock 6<sup>th</sup> forms at October 2019.

Gov	School	12	13	14	Post-16 Total
CA	Stanford & Corringham 6 <sup>th</sup> form	100	92		192
VA	Grays Convent				
CA	Harris Academy Chafford Hundred	206	159		365
CA	Harris Academy Riverside	56	38		94
CA	Ormiston Park Academy				
CA	The Gateway Academy				
CA	The Hathaway Academy				
CA	Harris Academy Ockendon	50	42		92
CA	William Edwards School				
	<b>TOTALS</b>	<b>412</b>	<b>331</b>		<b>743</b>

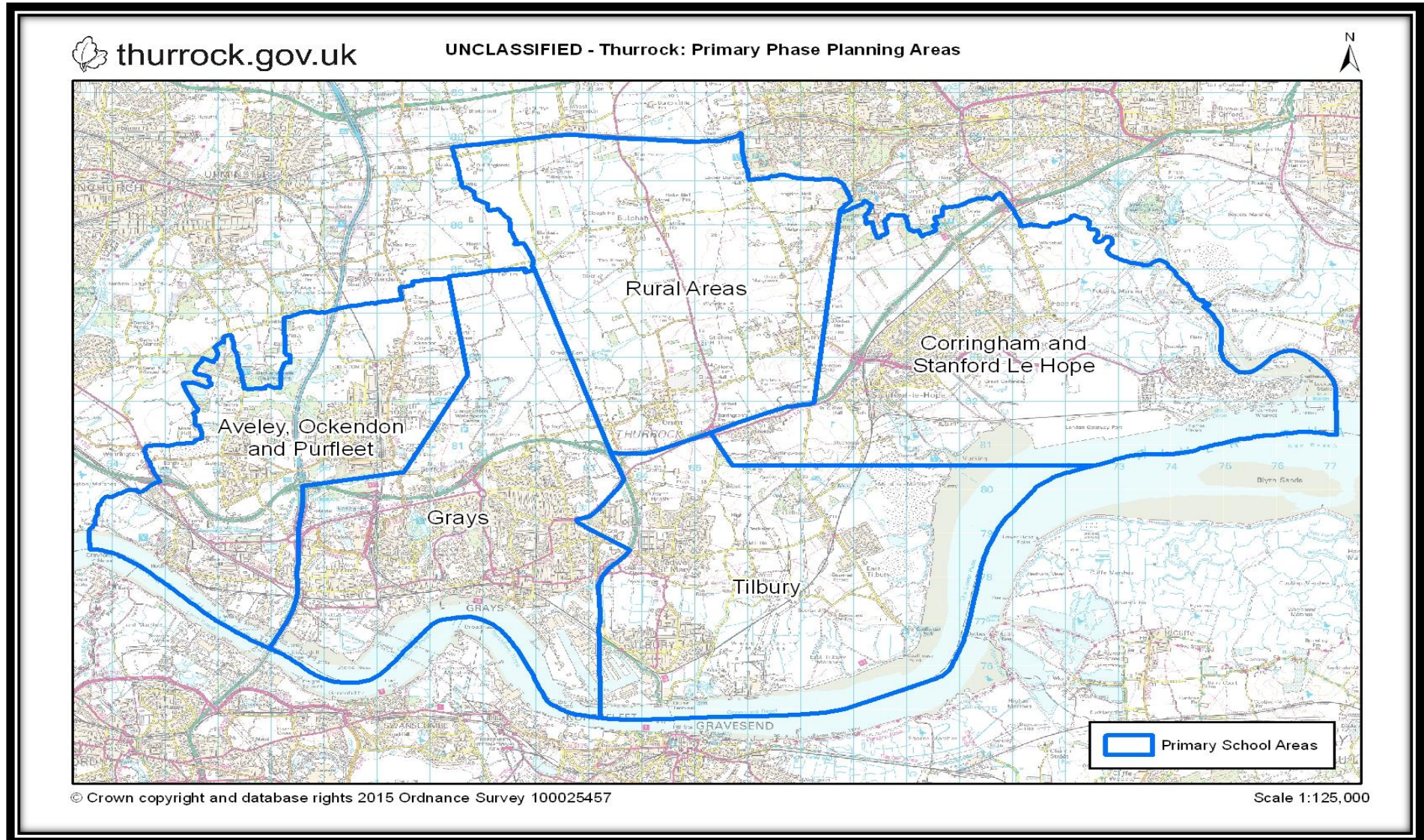


USP (A merger of Palmer's 6<sup>th</sup> form College in Grays and Seevic College in Benfleet) offer a range of A Level, BTEC and secretarial courses to over 5,000 students. Find out more about the courses on offer on the college website [www.uspcollege.ac.uk](http://www.uspcollege.ac.uk)

South Essex College of Further and Higher Education in Grays offers a wide range of training opportunities which lead to accredited qualifications. Young people can study anything from bricklaying to costume design, they also provide a small number of higher education programmes in partnership with University of East Anglia and University of Arts London.

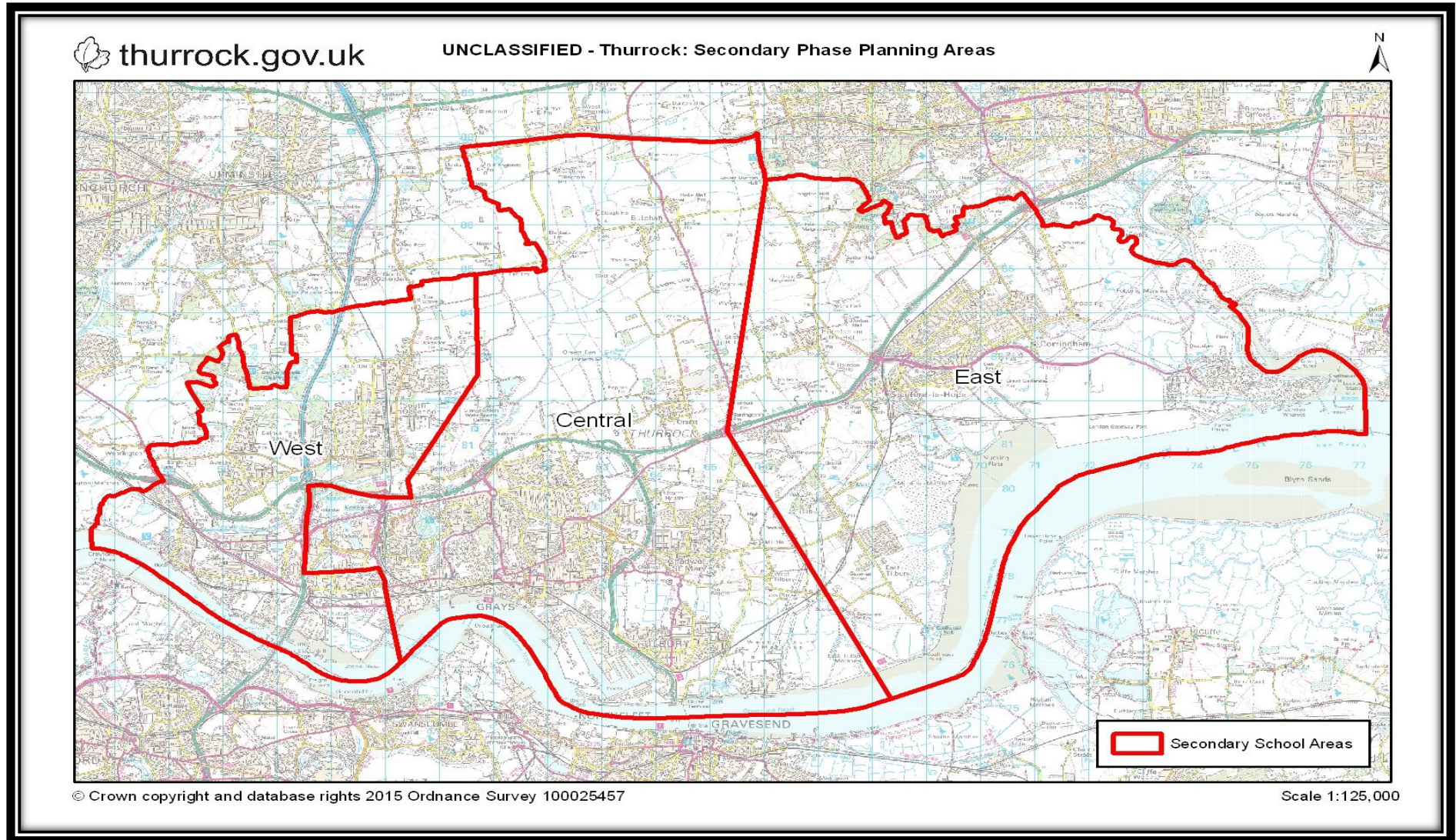
Thurrock has two special schools with a post 16 offer, Treetops and Beacon Hill, this information is available via the website.

# ANNEX 5: MAP PRIMARY PHASE PLANNING AREAS





# ANNEX 6: MAP SECONDARY PHASE PLANNING AREAS



## ANNEX 7: PRIMARY FORECAST RECEPTION

<b>Aveley, Ockendon &amp; Purfleet</b>		<b>RECEPTION FORECAST</b>				
<b>School</b>	<b>PAN</b>	<b>Sep-20</b>	<b>Sep-21</b>	<b>Sep-22</b>	<b>Sep-23</b>	<b>Sep-24</b>
Aveley	60	64	64	69	74	69
Benyon	60	24	27	28	47	33
Bonnygate	60	63	64	66	62	64
Dilkes	60	58	54	65	45	55
Holy Cross	30	30	30	30	30	30
Kenningtons	60	73	95	72	111	90
Purfleet	90	90	75	57	71	72
Shaw	60	69	58	44	55	54
Somers Heath	60	62	62	73	60	65
In Year Admissions		8	8	8	8	8
	<b>540</b>	<b>541</b>	<b>537</b>	<b>512</b>	<b>563</b>	<b>540</b>
<b>Grays</b>		<b>RECEPTION FORECAST</b>				
<b>School</b>	<b>PAN</b>	<b>Sep-20</b>	<b>Sep-21</b>	<b>Sep-22</b>	<b>Sep-23</b>	<b>Sep-24</b>
Belmont Castle	90	95	90	83	83	87
Deneholm	60	37	54	58	56	54
Harris Chafford Hundred	90	74	89	69	66	75
Harris Mayflower	150	111	130	103	102	112
Little Thurrock	90	90	98	121	83	99
Quarry Hill	60	61	60	73	73	68
St Thomas'	90	83	83	83	83	83
Stifford Clays	90	103	71	66	84	77
Thameside	120	116	96	102	95	100
Tudor Court	90	98	87	80	89	87
Warren	60	56	37	35	47	42
West Thurrock	60	58	59	54	52	55
In Year Admissions		15	14	14	14	14
	<b>1050</b>	<b>997</b>	<b>968</b>	<b>941</b>	<b>927</b>	<b>953</b>
<b>Tilbury</b>		<b>RECEPTION FORECAST</b>				
<b>School</b>	<b>PAN</b>	<b>Sep-20</b>	<b>Sep-21</b>	<b>Sep-22</b>	<b>Sep-23</b>	<b>Sep-24</b>
Chadwell St Mary	30	37	28	30	25	29
East Tilbury	90	100	106	139	142	125
Gateway	60	69	48	59	55	56
Herringham	60	46	57	54	60	56
Lansdowne	90	81	77	73	72	75
St Mary's	30	30	30	30	30	30
Tilbury Pioneer	60	79	62	80	64	70
Woodside	90	115	112	100	116	110
In Year Admissions		8	8	8	8	8
	<b>510</b>	<b>565</b>	<b>528</b>	<b>573</b>	<b>572</b>	<b>559</b>

## PRIMARY FORECAST RECEPTION CONTINUED

<b>Corringham &amp; Stanford le Hope</b>		<b>RECEPTION FORECAST</b>				
<b>School</b>	<b>PAN</b>	<b>Sep-20</b>	<b>Sep-21</b>	<b>Sep-22</b>	<b>Sep-23</b>	<b>Sep-24</b>
Abbots Hall	30	47	34	34	29	34
Arthur Bugler	60	65	47	57	57	55
Corringham	60	43	72	56	81	66
Giffards	60	48	84	64	71	70
Graham James	60	64	55	94	59	69
St Joseph's	30	29	29	29	29	29
Stanford-le-Hope	60	52	75	63	68	67
In Year Admissions		5	6	6	6	6
	<b>360</b>	<b>353</b>	<b>402</b>	<b>403</b>	<b>400</b>	<b>396</b>
<b>Rural</b>		<b>RECEPTION FORECAST</b>				
<b>School</b>	<b>PAN</b>	<b>Sep-20</b>	<b>Sep-21</b>	<b>Sep-22</b>	<b>Sep-23</b>	<b>Sep-24</b>
Bulphan	12	14	20	20	18	19
Horndon-on-the-Hill	30	20	23	26	15	21
Orsett	30	50	40	29	22	32
In Year Admissions		1	1	1	1	1
	<b>72</b>	<b>85</b>	<b>84</b>	<b>76</b>	<b>56</b>	<b>73</b>

*Red Cells indicate where projected numbers exceed the Published Admission Number (PAN)*



## ANNEX 8: PRIMARY FORECAST WHOLE SCHOOL

<b>Aveley, Ockendon &amp; Purfleet</b>		<b>WHOLE SCHOOL FORECAST</b>				
<b>School</b>	<b>PAN</b>	<b>Sep-20</b>	<b>Sep-21</b>	<b>Sep-22</b>	<b>Sep-23</b>	<b>Sep-24</b>
Aveley	420	459	479	481	477	488
Benyon	420	246	257	261	285	282
Bonnygate	420	438	456	468	478	486
Dilkes	420	419	413	416	401	398
Holy Cross	210	209	209	209	210	210
Kenningtons	420	441	461	459	519	549
Purfleet	630	579	585	571	596	607
Shaw	420	421	419	403	400	398
Somers Heath	420	389	421	436	436	441
In Year Admissions		54	55	56	57	58
	<b>3,780</b>	<b>3,654</b>	<b>3,753</b>	<b>3,759</b>	<b>3,857</b>	<b>3,915</b>
<b>Grays</b>		<b>WHOLE SCHOOL FORECAST</b>				
<b>School</b>	<b>PAN</b>	<b>Sep-20</b>	<b>Sep-21</b>	<b>Sep-22</b>	<b>Sep-23</b>	<b>Sep-24</b>
Belmont Castle	630	659	681	696	709	720
Deneholm	420	386	384	382	380	377
Harris Chafford Hundred	630	603	603	584	560	548
Harris Mayflower	1,050	823	863	876	836	828
Little Thurrock	630	618	627	660	655	669
Quarry Hill	420	413	417	436	458	469
St Thomas'	630	605	599	592	586	579
Stifford Clays	630	617	600	576	570	560
Thameside	840	772	785	779	763	760
Tudor Court	630	777	751	712	688	659
Warren	420	416	394	380	381	390
West Thurrock	420	415	434	448	468	484
In Year Admissions		107	107	107	106	106
	<b>7,350</b>	<b>7,211</b>	<b>7,245</b>	<b>7,228</b>	<b>7,160</b>	<b>7,149</b>
<b>Tilbury</b>		<b>WHOLE SCHOOL FORECAST</b>				
<b>School</b>	<b>PAN</b>	<b>Sep-20</b>	<b>Sep-21</b>	<b>Sep-22</b>	<b>Sep-23</b>	<b>Sep-24</b>
Chadwell St Mary	210	216	214	215	209	208
East Tilbury	630	684	714	765	800	837
Gateway	420	415	412	413	408	406
Herringham	420	401	410	416	440	458
Lansdowne	630	617	611	598	585	572
St Mary's	210	211	211	211	211	210
Tilbury Pioneer	420	460	475	497	475	479
Woodside	630	689	726	737	763	783
In Year Admissions		55	57	58	58	59
	<b>3,570</b>	<b>3,747</b>	<b>3,829</b>	<b>3,909</b>	<b>3,948</b>	<b>4,011</b>

Red Cells indicate where projected numbers exceed the Published Admission Number (PAN)

## PRIMARY FORECAST WHOLE SCHOOL CONTINUED

<b>Corringham &amp; Stanford le Hope</b>		<b>WHOLE SCHOOL FORECAST</b>				
<b>School</b>	<b>PAN</b>	<b>Sep-20</b>	<b>Sep-21</b>	<b>Sep-22</b>	<b>Sep-23</b>	<b>Sep-24</b>
Abbots Hall	210	265	270	275	254	258
Arthur Bugler	420	423	410	407	404	399
Corringham	420	411	424	419	437	448
Giffards	420	433	457	434	443	458
Graham James	420	422	419	454	453	463
St Joseph's	210	217	206	206	205	204
Stanford-le-Hope	420	412	447	467	503	535
In Year Admissions		39	39	40	40	41
	<b>2,520</b>	<b>2,622</b>	<b>2,672</b>	<b>2,702</b>	<b>2,739</b>	<b>2,806</b>
<b>Rural</b>		<b>WHOLE SCHOOL FORECAST</b>				
<b>School</b>	<b>PAN</b>	<b>Sep-20</b>	<b>Sep-21</b>	<b>Sep-22</b>	<b>Sep-23</b>	<b>Sep-24</b>
Bulphan	84	87	102	112	127	144
Horndon-on-the-Hill	210	184	178	175	162	161
Orsett	210	238	247	244	235	239
In Year Admissions		8	8	8	8	8
	<b>504</b>	<b>517</b>	<b>535</b>	<b>539</b>	<b>532</b>	<b>552</b>

<b>School</b>	<b>PAN</b>	<b>Sep-20</b>	<b>Sep-21</b>	<b>Sep-22</b>	<b>Sep-23</b>	<b>Sep-24</b>
<b>PRIMARY NUMBERS</b>	<b>17,724</b>	<b>17,488</b>	<b>17,768</b>	<b>17,868</b>	<b>17,967</b>	<b>18,161</b>
In Year Admissions		263	266	269	269	272
	<b>17,724</b>	<b>17,751</b>	<b>18,034</b>	<b>18,137</b>	<b>18,236</b>	<b>18,433</b>

Red Cells indicate where projected numbers exceed the Published Admission Number (PAN)

## ANNEX 9: SECONDARY FORECAST YEAR 7

<b>West Planning Area</b>	<b>YEAR 7 FORECAST</b>					
<b>School</b>	<b>PAN</b>	<b>Sep-20</b>	<b>Sep-21</b>	<b>Sep-22</b>	<b>Sep-23</b>	<b>Sep-24</b>
Harris Academy Riverside	180	189	185	195	198	190
Ormiston Park Academy	180	139	137	144	147	140
Harris Academy Ockendon	240	257	252	266	270	259
In Year Admissions		9	9	9	9	9
	<b>600</b>	<b>594</b>	<b>583</b>	<b>614</b>	<b>624</b>	<b>598</b>
<b>Central Planning Area</b>	<b>YEAR 7 FORECAST</b>					
<b>School</b>	<b>PAN</b>	<b>Sep-20</b>	<b>Sep-21</b>	<b>Sep-22</b>	<b>Sep-23</b>	<b>Sep-24</b>
Grays Convent	124	130	128	134	137	131
Harris Academy Chafford Hundred	180	189	185	195	198	190
The Gateway Academy	215	225	221	233	237	227
The Hathaway Academy	180	185	182	192	195	187
William Edwards	250	261	256	270	274	263
In Year Admissions		15	15	15	16	15
	<b>949</b>	<b>1,005</b>	<b>987</b>	<b>1,039</b>	<b>1,057</b>	<b>1,013</b>
<b>East Planning Area</b>	<b>YEAR 7 FORECAST</b>					
<b>School</b>	<b>PAN</b>	<b>Sep-20</b>	<b>Sep-21</b>	<b>Sep-22</b>	<b>Sep-23</b>	<b>Sep-24</b>
Gable Hall	272	278	273	287	292	280
Hassenbrook Academy	150	123	120	127	129	124
St Clere's	261	275	271	285	290	278
In Year Admissions		10	10	10	11	10
	<b>683</b>	<b>686</b>	<b>674</b>	<b>709</b>	<b>722</b>	<b>692</b>

*Red Cells indicate where projected numbers exceed the Published Admission Number (PAN)*

The forecast above does not include the two new free schools Orsett Heath Academy and Thames Park Academy. These schools cannot be part of the Local Authorities co-ordination in the first year of opening. They will be included in next year's pupil place plan. Therefore the tables above do not give an accurate forecast as these two schools are due to open in temporary accommodation, initially with a Published Admission Number (PAN) of 120 spaces each starting in Year 7 Sept 2020.



## ANNEX 9: SECONDARY FORECAST WHOLE SCHOOL

<b>West Planning Area</b>	<b>WHOLE SCHOOL FORECAST</b>					
<b>School</b>	<b>PAN</b>	<b>Sep-20</b>	<b>Sep-21</b>	<b>Sep-22</b>	<b>Sep-23</b>	<b>Sep-24</b>
Harris Academy Riverside	900	638	828	904	987	999
Ormiston Park Academy	900	689	694	740	737	744
Harris Academy Ockendon	1,200	1,222	1,258	1,300	1,339	1,356
In Year Admissions		38	42	44	46	46
	<b>3,000</b>	<b>2,587</b>	<b>2,822</b>	<b>2,988</b>	<b>3,109</b>	<b>3,145</b>
<b>Central Planning Area</b>	<b>WHOLE SCHOOL FORECAST</b>					
<b>School</b>	<b>PAN</b>	<b>Sep-20</b>	<b>Sep-21</b>	<b>Sep-22</b>	<b>Sep-23</b>	<b>Sep-24</b>
Grays Convent	620	650	655	666	679	660
Harris Academy Chafford Hundred	900	1,001	974	1,005	1,030	1,034
The Gateway Academy	1,075	1,110	1,143	1,178	1,217	1,213
The Hathaway Academy	900	890	912	956	994	1,016
William Edwards	1,250	1,296	1,301	1,325	1,324	1,340
In Year Admissions		74	75	77	79	79
	<b>4,745</b>	<b>5,021</b>	<b>5,060</b>	<b>5,207</b>	<b>5,323</b>	<b>5,342</b>
<b>East Planning Area</b>	<b>WHOLE SCHOOL FORECAST</b>					
<b>School</b>	<b>PAN</b>	<b>Sep-20</b>	<b>Sep-21</b>	<b>Sep-22</b>	<b>Sep-23</b>	<b>Sep-24</b>
Gable Hall	1,360	1,297	1,315	1,348	1,395	1,410
Hassenbrook Academy	750	521	529	578	618	625
St Clere's	1,305	1,391	1,454	1,519	1,450	1,474
In Year Admissions		48	49	52	52	53
	<b>3,415</b>	<b>3,257</b>	<b>3,347</b>	<b>3,497</b>	<b>3,515</b>	<b>3,562</b>

<b>TOTALS</b>	<b>PAN</b>	<b>Sep-20</b>	<b>Sep-21</b>	<b>Sep-22</b>	<b>Sep-23</b>	<b>Sep-24</b>
<b>SECONDARY NUMBERS</b>	<b>11,160</b>	10,705	11,063	11,519	11,770	11,871
In Year Admissions		160	166	173	177	178
	<b>11,160</b>	<b>10,865</b>	<b>11,229</b>	<b>11,692</b>	<b>11,947</b>	<b>12,049</b>